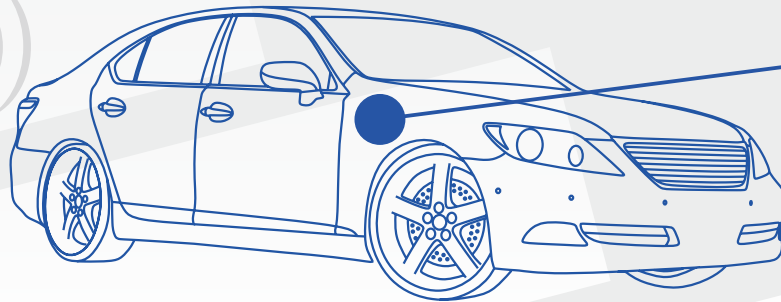
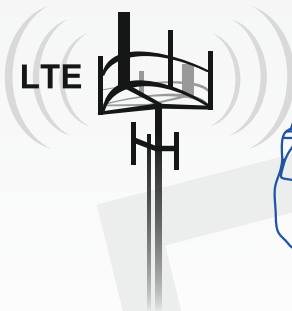




RUT850

RUT850 is compact slim design LTE wireless router. Router support latest IEEE802.11n and IEEE802.11b/g WLAN standards and provide wireless receiving and transmitting rate up to 150 Mbps. LTE up to 150 Mbps DL and 50 Mbps UL.



Whether it is a long family trip, a camping spot or a need to access a backend office – RUT850 is a perfect choice. This sleek automotive router supports high speed LTE CAT4, which provides speeds of up to 150Mbps for your leisure or business demands.

Connect multiple devices, watch movies, video streams, or connect to remote surveillance equipment with ease. With support of latest IEEE802.11n and IEEE802.11b/g WLAN standards you can be sure, that full LTE potential can be realized: no bottlenecks from LTE to WiFi



RUT850 can be used either in light vehicles or busses, trucks and other heavy transport, which utilizes 24V battery. This is achieved by wide input voltage range (7-30Vdc) and voltage surge protection – no need for additional surge protection equipment. Power supply socket connector has an Ignition digital input, which controls router's sleep mode status.

Set up your internet connectivity and be ready to go in minutes with just a few clicks from your smartphone. Manage and monitor router's performance without physically connecting to the device.



Manage your routers fleet remotely. With full support of centralized Teltonika Remote Management System you will be able to access, control and monitor all of your routers within a single platform. This will help you make better decisions for future installments and best-use practices.

HARDWARE

- LTE
- WiFi
- 7 – 30 VDC
- Internal WiFi antenna
- Input for Ignition
- SIM card drawer

SOFTWARE

- Dynamic DNS
- Periodic reboot
- SMS Control / Gateway
- Mobile on Demand
- Hotspot
- Mobile Quota Control
- Backup WAN
- NTP
- Ping Reboot
- Web Filter
- Sleep Mode

LTE

FDD 2100(B1)/1800(B3)/2600(B7)/900(B8)/800(B20) MHz
Up to 150 Mbps downlink speed
Up to 50 Mbps uplink speed
All bands with diversity

UMTS

2100(B1)/900(B8) MHz
DC-HSPA+ mode: 42 Mbps downlink speed
DC-HSPA+ mode: 5.76 Mbps uplink speed
UMTS mode: 384 kbps DL, 384 kbps UL
RX diversity antenna

GSM/GPRS/EDGE

1800(B3)/900(B8) MHz
Power Class 4 (33dBm ±2dB) for GSM 850/900MHz
Power Class 1 (30dBm ±2dB) for GSM 1800/1900MHz
Power Class E2 (27dBm ±3dB) for EDGE 850/900MHz
Power Class E2 (26dBm +3/-4dB) for EDGE 1800/1900MHz
GPRS: 85.6 kbps DL, 85.6 kbps UL
EDGE: 236.8 kbps DL, 236.8 kbps UL

ELECTRICAL, MECHANICAL & ENVIRONMENTAL

Dimensions (H x W x D) 131 mm x 79 mm x 17 mm
Weight 106 g
Input voltage range 7 – 30 VDC
Power consumption < 5 W
Operating temperature -40 °C to 75 °C
Storage temperature -45 °C to 80 °C
Operating humidity 10 % to 90 % non-condensing
Storage humidity 5 % to 95 % non-condensing

WiFi

IEEE 802.11b/g/n WiFi standards
AP and STA modes
64/128-bit WEP, WPA, WPA2, WPA&WPA2 encryption methods
2.401 – 2.495 GHz WiFi frequency range
20dBm max WiFi TX power
SSID stealth mode and access control based on MAC address

